



This product is available through:

JRT Associates

800-221-0111

**UNMATCHED
SOLUTIONS
FOR QUALITY
CONTROL**

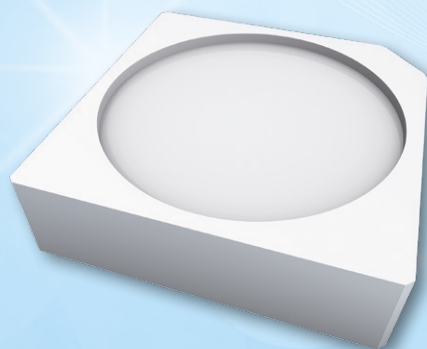
Pro-Dent Set

The Pro-Dent set is a **universal set of phantoms** for carrying out constancy and acceptance tests of **conventional and digital** dental X-ray units (intra-oral, panoramic and cephalometric).

This is **not an all-in-one device** where results of tests blur each other out. This is the **only solution on the market** that makes it possible to **measure the X-ray beam collimation** with a dental film or a digital detector.

**universal set
of phantoms
for analogue
and digital
units**

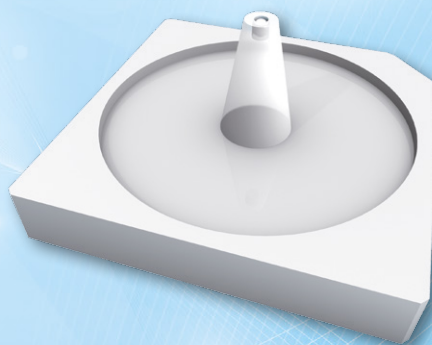
The **Pro-Dent** set consists of:



Pro-Dent α phantom

Technical data (can be modified to customer specifications):

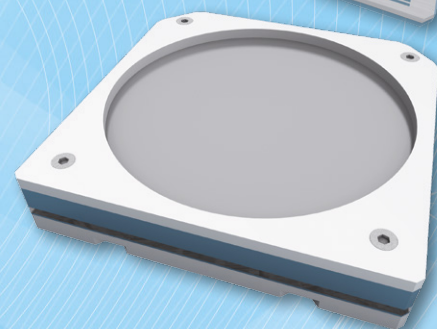
- 3 step wedge (first step made of copper foil 0.3 mm thick, the next ones are made of polytetrafluoroethylene 8 and 16 mm thick)
- cover made of PMMA



Pro-Dent β phantom

Technical data (can be modified to customer specifications):

- cone for perpendicular X-Ray beam control in the range of $0^\circ \div 1.5^\circ$
- pattern for beam radius estimation
- cover made of PMMA



Pro-Dent γ phantom

Technical data (can be modified to customer specifications):

- pattern for line pair resolution evaluation (from 4 to 8 LP/mm)
- optional second pattern for line pair resolution evaluation (from 1.6 to 3 LP/mm) – OPG units
- four holes in 0.5 mm Al foil for low contrast resolution tests
- additional 6 mm aluminium filter
- cover made of PMMA





This product is available through:

JRT Associates

800-221-0111

**UNMATCHED
SOLUTIONS
FOR QUALITY
CONTROL**

With the Pro-Dent set you can do the following tests:

- dose reproducibility
- development process stability
- perpendicular X-ray beam (range $0^\circ \div 1.5^\circ$)
- limitation and alignment of the X-Ray beam (including beam radius measurement)
- spatial / line pair resolution (perpendicular, parallel and rotated 45° to anode-cathode line)
- low contrast resolution



Product features:

- complies with:
 - IEC 61223-2-7 and IEC 61223-3-4
 - DIN 6868-5 and DIN V 6868-151
 - ÖNORM S 5240-5 and ÖNORM S 5240-11
- CE certified
- the Manual provides detailed guidelines for carrying out each test, results assessment and registration

Accessories:

- 0.8 mm copper filter – patient's head equivalent
- positioning stand with place for an analogue film or a digital detector
- band for firm, perpendicular attachment of the phantom to the X-Ray unit's beam applicator
- rings for centering phantoms on the X-Ray unit's beam applicator
- CD with documentation
- elegant and convenient aluminium box for storing phantoms

